



PART #50-1565-00

170 MONTAUK SUNTOP W/ BOOT

W/ STAINLESS STEEL FRAME

Installation Hardware:

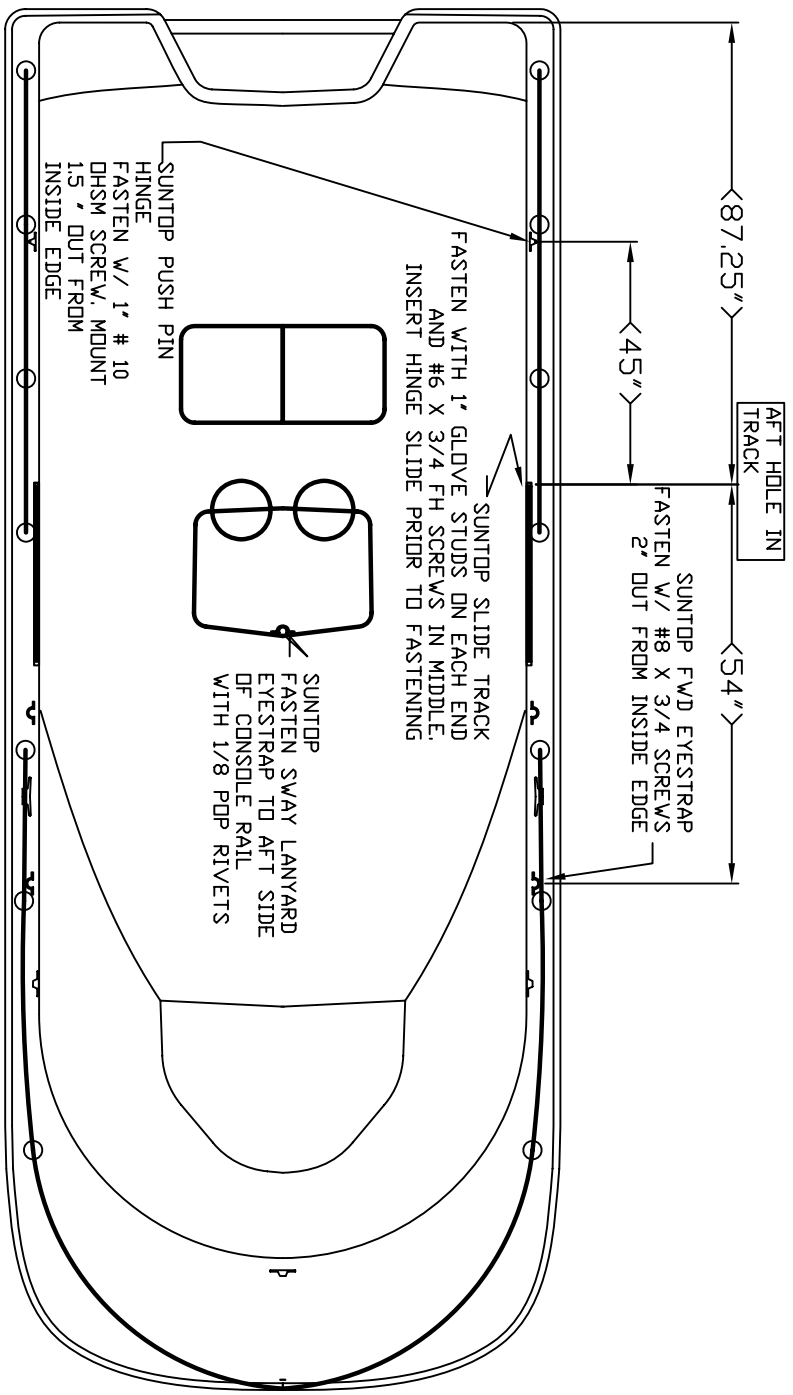
Part No.

3 Large eyestraps	25-2202-00
2 Double Tab Hinge Slide Units	10-1201-00
4 Plastic End Stops	16-3045-00
2 27" Aluminum Slide Tracks	25-1381-00
2 Angle Push Pin Hinge	25-0367-00
4 Track shims white PVC	16-4028-00
4 3/4" X #8 OH Screws	25-2266-00
4 1" Glove Studs	25-0287-00
4 3/4" X #6 Flat head Screws	25-2624-00
2 1/8 Pop Rivets	25-0453-00
4 #10 X 1" Sheet Metal Screws	25-0302-00
1 Installation Drawing	99-1565-00

NOTE: This Suntop may be stowed on the struts aft or folded forward.

Other Canvas Available

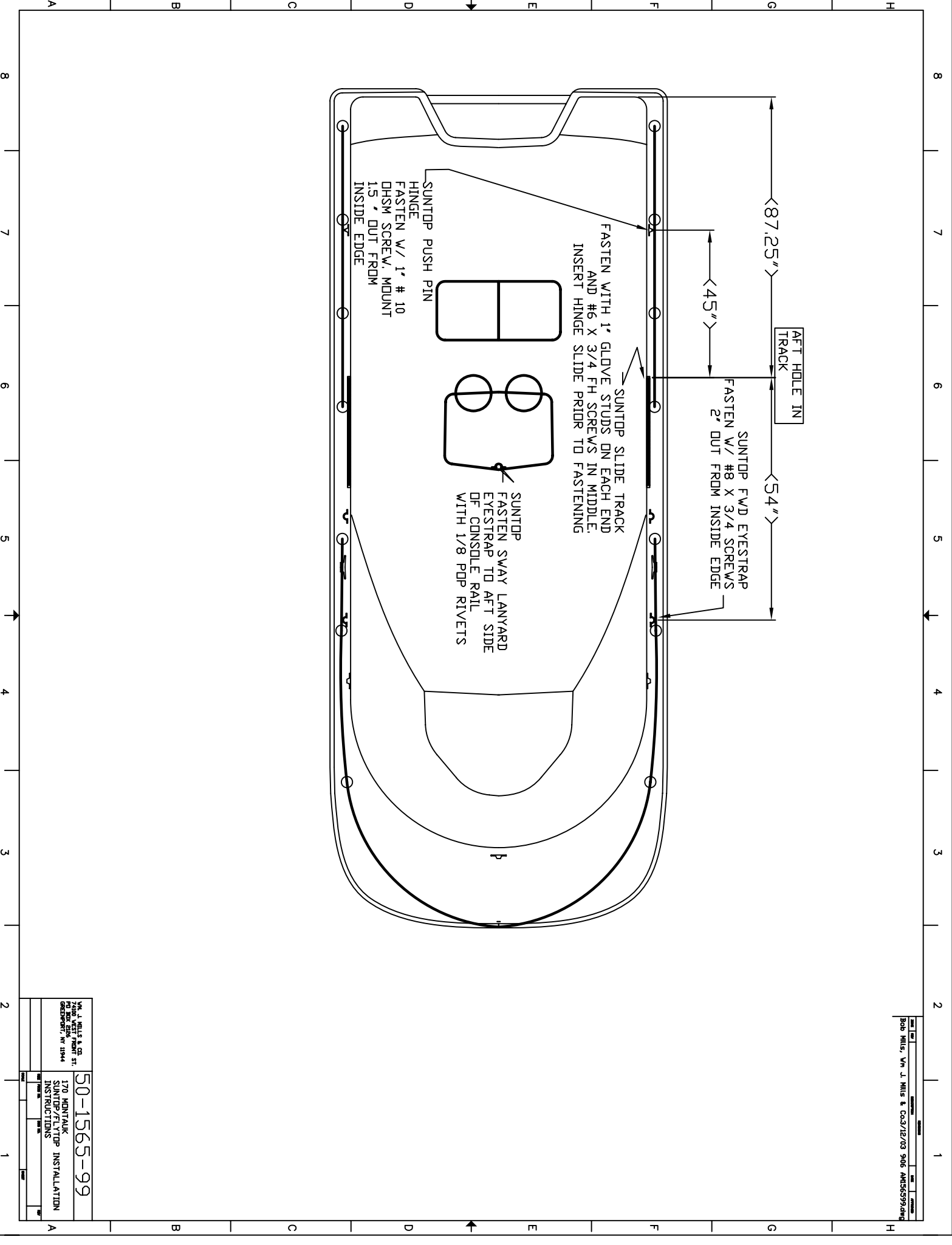
Console w/o Rod holders w/ Cushion Cover	50-1569-00
Console / Cooler Cover	50-1570-00
Console Cover w/ Rod Holders & Cushion	50-1566-00
Reversible Pilot Seat Cover	50-1567-00
Mooring Cover w/o Bow Rail	50-1568-00
Mooring Cover w/ Bow Rail & Side Rails	50-1568-01



<87.25">

<45">

<54">



Vn. J. Hills & Co. PO BOX 2554 DELAWARE, WY 82404		50-1565-99 170 MONTAUK SUNTOP/FLYTOP INSTALLATION INSTRUCTIONS
DATE: _____ BY: _____	REV: _____ BY: _____	